

HODAKA

ACE 90



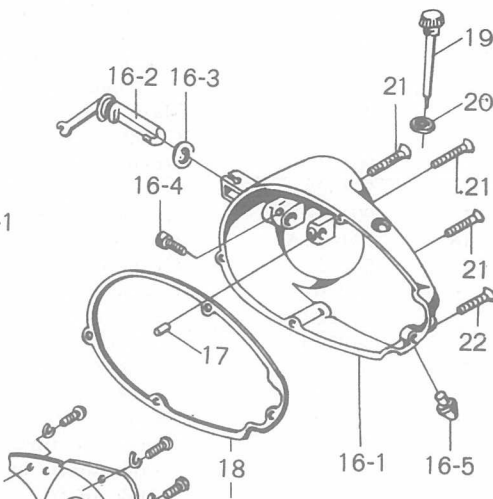
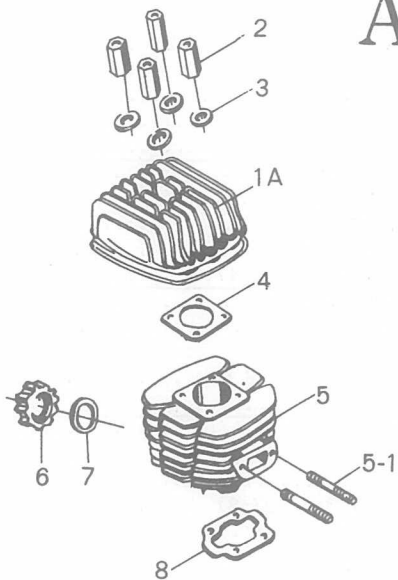
Parts List

Part No. with (※) mark are optional items

Fig No.	Part No.	Part Name	Unit	Q'ty
A- 1A	902501A	Cylinder head	1	pc.
- 2	902503	Cylinder head nut	4	pc.
- 3	902504	Cylinder head washer	4	pc.
- 4	902502	Cylinder head gasket	1	pc.
- 5	902505	Cylinder	1	pc.
- 5- 1	902506	Cylinder inlet stud	2	pc.
- 6	902508	Exhaust nut	1	pc.
- 7	902509	Exhaust gasket	1	pc.
- 8	902507	Cylinder base gasket	1	pc.
- 9	902000	Magneto cover ass'y (9-1~9-28)	1	pc.
- 9- 1	902001	Magneto cover	1	pc.
- 9- 2	902004	Magneto cover grease nipple	1	pc.
- 9- 4	902002	Shifter cover	1	pc.
- 9- 5	(41)0410	Shifter cover screw	2	pc.
- 9- 6	902021	Shifter guide	1	pc.
- 9- 7	902022	Shifter arm	1	pc.
- 9- 8	902020	Shifter pin	1	pc.
- 9- 9	90202502	Shifter guide spacer t=0.2mm	1	pc.
- 9- 9	90202503	Shifter guide spacer t=0.3mm	1	pc.
- 9-10	902023	Shifter sliding pin	1	pc.
- 9-11	904620	Shifter sliding pin snap ring	1	pc.
- 9-12	902026	Shifter arm adjust bolt	1	pc.
- 9-13	(63)06015	Shifter arm spring washer	1	pc.
- 9-14	(51)06055	Shifter arm nut	1	pc.
- 9-15	902005	Foot change shaft	1	pc.
- 9-16	902009	Foot change shaft key	1	pc.
- 9-17	902010	Foot change shaft key pin	1	pc.
- 9-18	902011	Foot change shaft key snap ring	1	pc.
- 9-19	902008	Foot change ratchet	1	pc.
- 9-20	902012	Foot change ratchet spring	1	pc.
- 9-21	(25)0610	Foot change center screw	1	pc.
- 9-22	90201502	Foot change shaft washer t=0.2mm	1	pc.
- 9-22	90201503	Foot change shaft washer t=0.3mm	1	pc.
- 9-23	902014	Foot change shaft snap ring	1	pc.
- 9-24	902017	Foot change ratchet plunger	1	pc.
- 9-25	902018	Foot change ratchet plunger spring	1	pc.
- 9-26	902029	Foot change inside cover	1	pc.
- 9-27	(41)0510	Foot change inside cover screw	6	pc.
- 9-28	(63)0501	Foot change inside cover spring washer	6	pc.
-10	902030	Foot change lever	1	pc.
-11	902032	Foot change lever rubber	1	pc.
-12	(10)0622	Foot change lever bolt	1	pc.
-13	(63)06015	Foot change lever spring washer	1	pc.
-14	(46)0645	Magneto cover screw	1	pc.
-15	(46)0660	Magneto cover screw	2	pc.
-16	901500	Clutch side cover ass'y (16-1~16-5)	1	pc.
-16- 1	901501	Clutch side cover	1	pc.
-16- 2	901503	Clutch lever	1	pc.
-16- 3	901502	Clutch lever O ring	1	pc.
-16- 4	901504	Clutch lever rivet	1	pc.
-16- 5	901506	Kick crank shaft stop rubber	1	pc.
-17	901507	Clutch pressure piece	1	pc.
-18	901508	Clutch side cover gasket	1	pc.
-19	901510	Oil gauge	1	pc.
-20	901005	Oil gauge rubber gasket	1	pc.
-21	(46)0660	Clutch side cover screw	3	pc.
-22	(46)0640	Clutch side cover screw	1	pc.

A

16(16-1~16-5)



9 (9-1~9-28)

